

**Panasonic PC that is pre-installed following OS  
Windows 10, Windows 8.1, Windows 8, Windows 7**

**Remediate Service Path Vulnerability Utility Operation Procedure**

2018/10/30

This document describes how to operate "Remediate Service Path Vulnerability Utility".

**1. Procedure for installation**

1-1. Download the installation program.

In the same site where you downloaded this document,  
download installation program.

RSrvPath\_V1.00L10.exe

1-2. Expand the installation program.

(1) Execute "RSrvPath\_V1.00L10.exe".

(2) If User Account Control Window appears, click [Yes].

(3) Read the license agreement carefully, and click [Yes].

(4) The screen to specify the destination location appears. The default

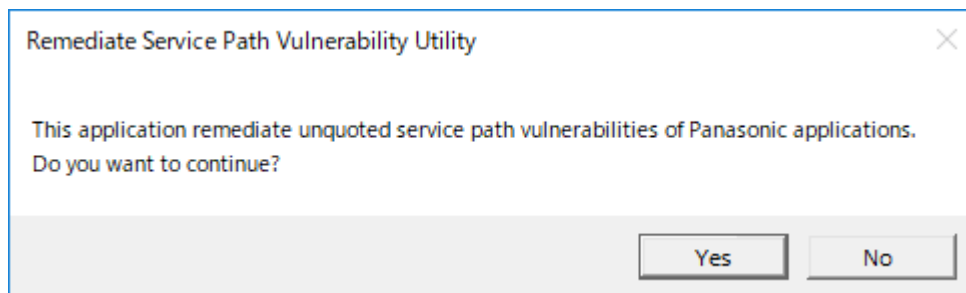
location is "C:/util2/RSrvPath". Specify your location and click [OK].

(You usually don't need to change the location.) Explorer will be  
displayed.

## 2. Execution for procedure

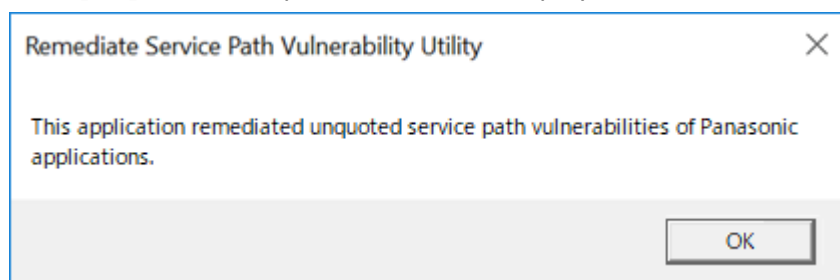
2-1. Execute "RSrvPath.exe" from the Installation location.

2-2. Click [Yes] when the confirmation screen is displayed.



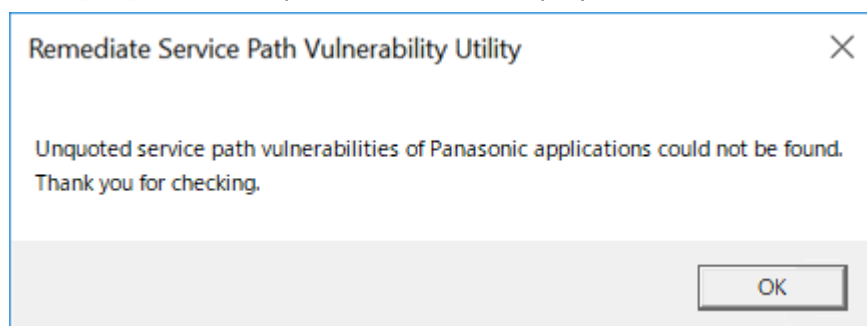
### <When vulnerabilities are detected >

Click [OK] when completion screen is displayed.



### <When vulnerabilities are not detected>

Click [OK] when completion screen is displayed.



The procedure for operating the "Service Path Vulnerability Corrective Utility" has been completed.