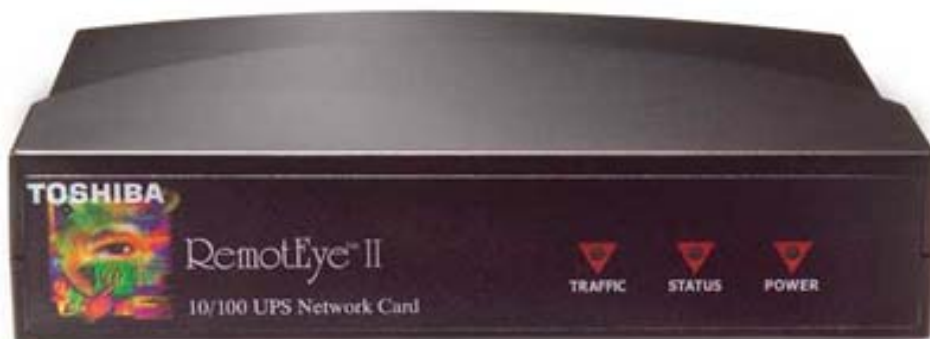


RemotEye II Quick Installation Guide

Windows Users



Installing RemotEye II/Internal

Follow these steps to install the RemotEye II/Internal card.

- Slide the RemotEye II/Internal printed circuit board into the extension option slot of the UPS.
- Secure the printed circuit board using the UPS-supplied screws. (See **Error! Reference source not found.**)

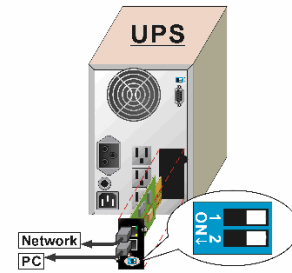


Figure 1: RemotEye II/Internal

Installing RemotEye II/External

Follow these steps to install the RemotEye II/External device.

- Insert the power adapter cable of the RemotEye II into the 12 VDC power receptacle of the RemotEye II device.
- Plug the RemotEye II power adapter into a 120/220 VAC power source. For best results, be sure outlet is powered by a Toshiba UPS.
- Connect the UPS cable from the RS232 serial port of the Toshiba UPS to the RemotEye II/External UPS port. (See **Error! Reference source not found.**)

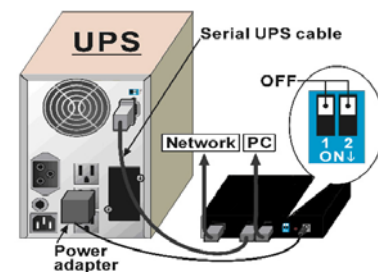


Figure 2: RemotEye II/External

Configuration

RemotEye II must be configured for proper operation on its network.

Configuring the RemotEye II via Terminal

The RemotEye II can be configured by directly connecting to the device.

Hardware Setup

Direct configuration is accomplished through the provided cable. Follow these steps to setup the hardware for direct RemotEye II configuration:

- Connect the DB9 female end of the PC cable to the terminal or workstation COM port.
- Connect the RJ45 end of the PC cable to the PC port of RemotEye II/External or the COM port of the RemotEye II/Internal.

Software Setup

The direct configuration is accomplished by using the RS232 communication protocol. The direct communication can be performed from a workstation running Terminal Emulator Software (TES)

Connecting to the RemotEye II via Terminal

A direct configuration session can easily be established once the hardware and software are properly set up. Follow these steps to begin configuration:

Terminal Emulator Example

To configure the RemotEye II from a Windows platform, use Hyperterminal. Hyperterminal is a standard terminal emulator packaged with any Windows operating system. Launch the Hyperterminal program by navigating to Start → Programs → Accessories → Hyperterminal → Hyperterminal, and follow the prompts.

Enter a name and select an icon for the application at the Connection Dialog box.

Select a direct connection to an appropriate com port listed in the pull-down menu.

Ensure that the Properties dialog box is setup as follows:

Baud Rate — 9600

Data Bits — 8

Parity — None

Stop Bits — 1

Flow Control — None

Press [Enter] and the RemotEye II version and Password field will be displayed (see **Error! Reference source not found.**).

Reference source not found.

Enter the password (default is “public”) and press [Enter] to display the RemotEye II Main Menu.

```
+=====+
|                                     |
|               [ TIC RemotEye II Login Menu ]               |
|                                     |
+=====+
Enter Password: *****
```

Figure 3: Console Login Screen

The seven options provided in the RemotEye II Main Menu provide access to all system RemotEye II configuration parameters. These options (see the Main Menu Description on **Figure 4: Console Main Menu**) and their submenus are discussed in more detail in the next section.

```
+=====+
|                                     |
|               [ TIC RemotEye II Main Menu ]               |
|                                     |
+=====+
1. TIC RemotEye Configuration
2. SNMP Communities
3. SNMPV3 USM Table
4. Trap Receiver Table
5. Reset Configuration To Default
6. Save and Exit
7. Save and Restart Agent

Please Enter Your Choice =>
```

Figure 4: Console Main Menu

Toshiba RemotEye II Configuration

Main Menu →(1)Toshiba RemotEye II Configuration (see Figure 5: Console Configuration Menu Description).

```

+=====+
|          [ TIC RemotEye II Configuration Menu ]          |
+=====+
1. System Group
2. Control Group
3. Parameter Group
4. Email Group
5. EMD Group
0. Return to previous menu

Please Enter Your Choice =>

```

Figure 5: Console Configuration Menu Description

System Group

Main Menu →(1)Toshiba RemotEye II Configuration →(1)System Group (see Figure 6: Console System Group Menu Description).

The System Group provides access to the system settings listed below. The settings may be viewed or changed from this screen. When using the Dynamic Host Configuration Protocol (DHCP), items 1 – 3 will be retrieved automatically.

```

+=====+
|          [ System Group Menu ]          |
+=====+
RemotEye II Agent Version : TIC RemotEye II v3.00
Ethernet address   : 00 E0 D8 08 80 0D
1. Ip Address      : 172.18.1.63
2. Gateway Address : 172.18.1.1
3. Network Mask    : 255.255.240.0
4. Date and Time
0. Return to previous menu

Please Enter Your Choice =>

```

Figure 6: Console System Group Menu Description

Making the Network Connection

Each Ethernet network is different. Therefore, the following steps should be used as an outline for connecting the RemotEye II to a network:

- Connect one end of a Category 5 cable to the NETWORK RJ45 receptacle of RemotEye II.
- Connect the other end of the Category 5 cable to a designated network switch or hub. A network administrator will allocate an available port.
- Verify a network link has been established. On RemotEye II/External, confirm Traffic LED on RemotEye II is illuminated. On RemotEye II/Internal, confirm the leftmost, green LED is illuminated

Connecting to the RemotEye II via HTTP

A web session can be established once the hardware and software have been prepared. Follow these steps to begin configuration:

- c) Launch the web browser.
- d) Enter the URL for RemotEye II in the browser's address field. For example, <http://10.0.37.189>. The home page of the RemotEye II will be displayed once a connection is established (see **Error! Reference source not found.**).

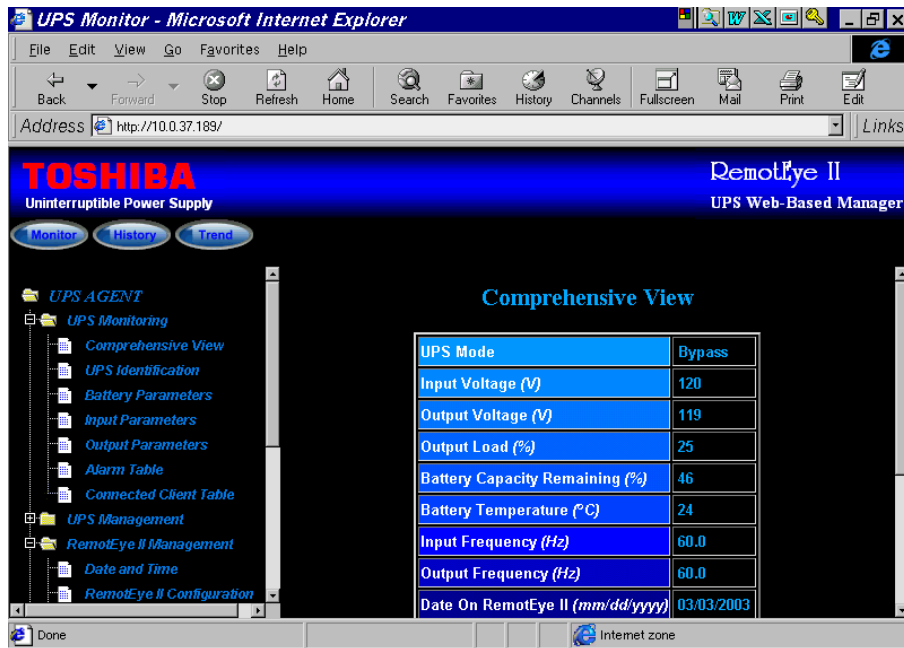


Figure 7: RemotEye II HTTP Page

Upgrading RemotEye II Firmware from Windows via Network

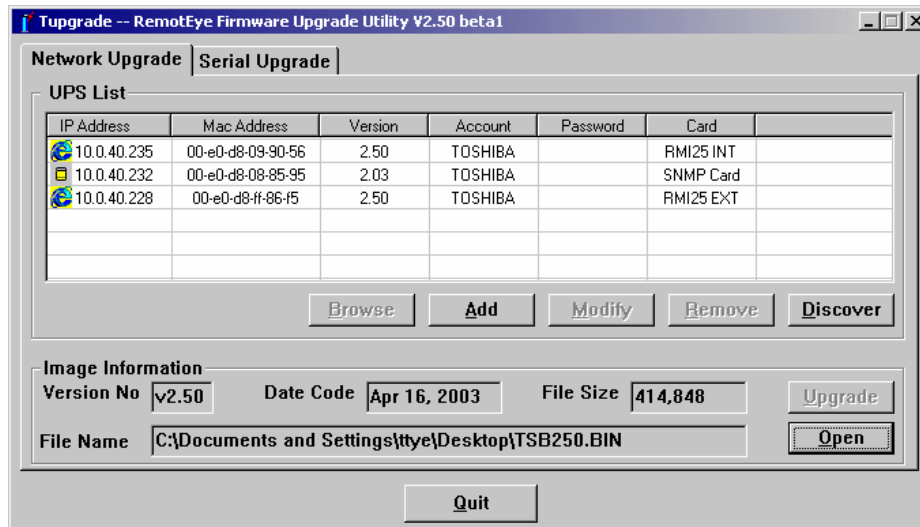


Figure 8: Tugrade, RemotEye II Upgrade Utility via Network

The RemotEye II firmware may be upgraded from a Windows platform by performing the following procedure.

- A PC with a Windows 95/98, 2000, NT, XP, or Vista operating system installed will be required for this procedure.
- On the PC, create a directory named Upgrade and copy the contents of the RemotEye II Upgrade CD-ROM to the Upgrade directory.
- For network upgrade, ensure that DIP switches 1 and 2 of the RemotEye II are off.
- From the Control Group menu, set the TFTP Upgrade Control to Enabled.
- From the Upgrade directory, run Tugrade.exe and a dialog box will be displayed.
- Click Discover to search for the RemotEye II on the network.
- Select the RemotEye II to be upgraded and enter the password.
- Click Open to load the upgrade file.
- Path to the upgrade file and select the latest version.
- Click Upgrade to transfer the file to the upgradeable read-only memory of the RemotEye II.
- When the transfer is complete the RemotEye II will reboot.

User Manual

The full RemotEye II User Manual (P/N 500024) is provided on the enclosed CD in electronic (PDF) format.

Contacting the TOSHIBA Customer Support Center

TOSHIBA's Customer Support Center can be contacted to obtain help in resolving any RemotEye II system problem that you may experience or to provide application information.

The Support Center can be reached at 877-867-8773 (toll free) or 713-466-0277. The center is open from 8 a.m. to 5 p.m. (CST), Monday through Friday.

You may also contact TOSHIBA by writing to:

TOSHIBA International Corporation
13131 West Little York Road
Houston, Texas 77041-9990.

For further information on TOSHIBA's products and services, please visit our website at [HTTP://WWW.TOSHIBA.COM/IND](http://www.toshiba.com/ind).